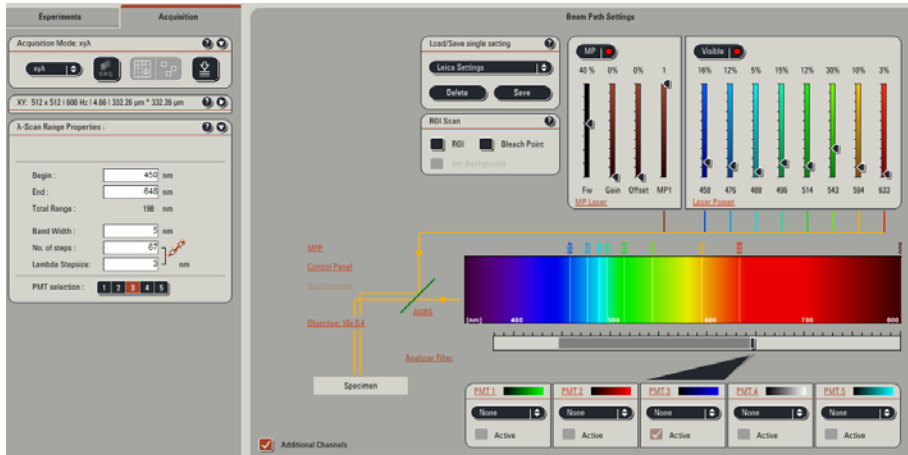


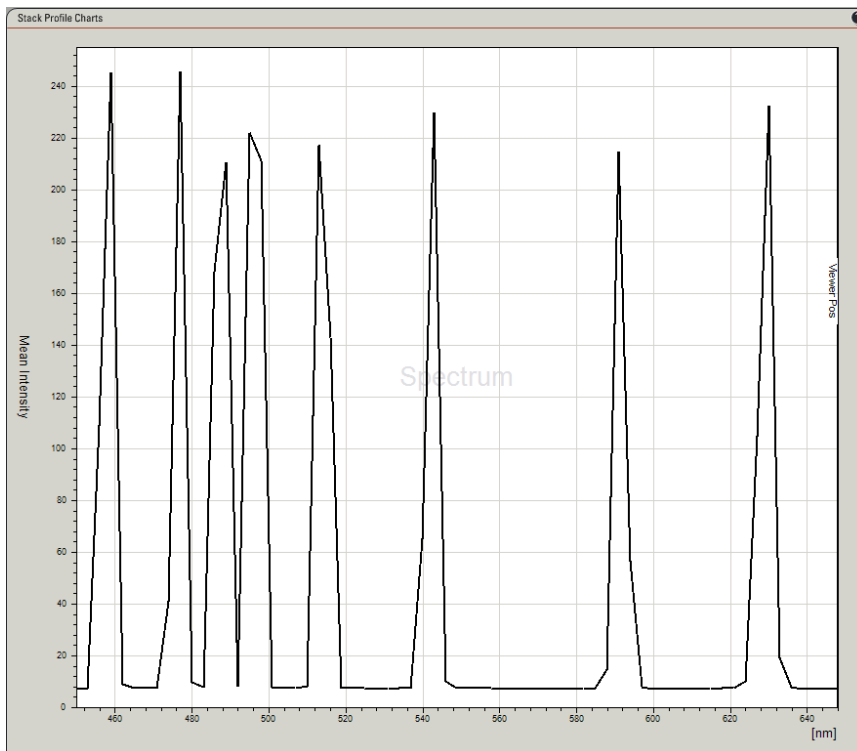
# Using LASER as standards for spectral detection

Use the provided mirror slide w/lower magnification lens (i.e., 10x).

- 1.) Focus first on the edge of the mirror, either via the microscope or directly on the confocal. This will make it easier to find focus.
- 2.) Setup spectral detection; vary the LASER power to achieve similar output at a single gain setting.



On a Leica systems, as with most system, there is enough LASER light collected to over come any ND blocking.



This is the plot of all 8 of our visible LASER lines. The absolute height of the peaks is irrelevant; the FWHM is what determines the resolution of the system